



twyn hywel
energy park

PEDW Reference: DNS/3272053

Collaborative Benefits Report

Document Reference Number: 13.1

Revision Number 2

July 2023

Bute Energy

Contents

| | | |
|--|-----------|--------------------------------|
| Chapter 1 | | Appendix 1 |
| Purpose of Document | 1 | Heritage Interpretation |
| Chapter 2 | | |
| Bute Energy | 3 | |
| Chapter 3 | | |
| The Proposed Development | 4 | |
| Chapter 4 | | |
| Benefits of the Proposed Development | 6 | |
| Wellbeing of Future Generations | 6 | |
| Summary of Proposed Development Benefits | 7 | |
| Chapter 5 | | |
| Local and Shared Ownership | 11 | |
| Chapter 6 | | |
| Our Stakeholders and the Engagement Process | 12 | |
| High Level Stakeholder Engagement Mapping | 12 | |
| Chapter 7 | | |
| The Community Benefit Fund | 17 | |
| Community Benefit Fund Governance Structure | 17 | |
| Chapter 8 | | |
| Community Benefits Delivered to Date | 23 | |
| Education | 23 | |
| Chapter 9 | | |
| Conclusions | 26 | |

Chapter 1

Purpose of Document

1.1 In June 2022 Welsh Government published Local and Shared Ownership of Energy Projects: Guidance¹. This sets out how decarbonisation of Wales' energy system and the wider economy can deliver the best outcomes for the people of Wales. It supports the development of proposals which are 'locally owned' or have 'shared ownership' as defined by the policy guidance.

1.2 The guidance makes it clear that whilst not mandatory, decision makers may request developers to submit a Collaborative Benefits Report (CBR) alongside statutory planning applications or a Developments of National Significance (DNS) application. It adds that *"this would further support the wording within Planning Policy Wales in which applications should demonstrate the full economic, environmental and social benefits of development. It also aligns with similar provisions in the Wales National Marine Plan and of Future Wales in the context of DNS applications"*.

1.3 This CBR introduces Bute Energy as a Welsh developer, describes our unique approach to maximising community benefits and presents a range of options for collaborative benefits to be realised by the Twyn Hywel Energy Park together with detail of how they will be delivered.

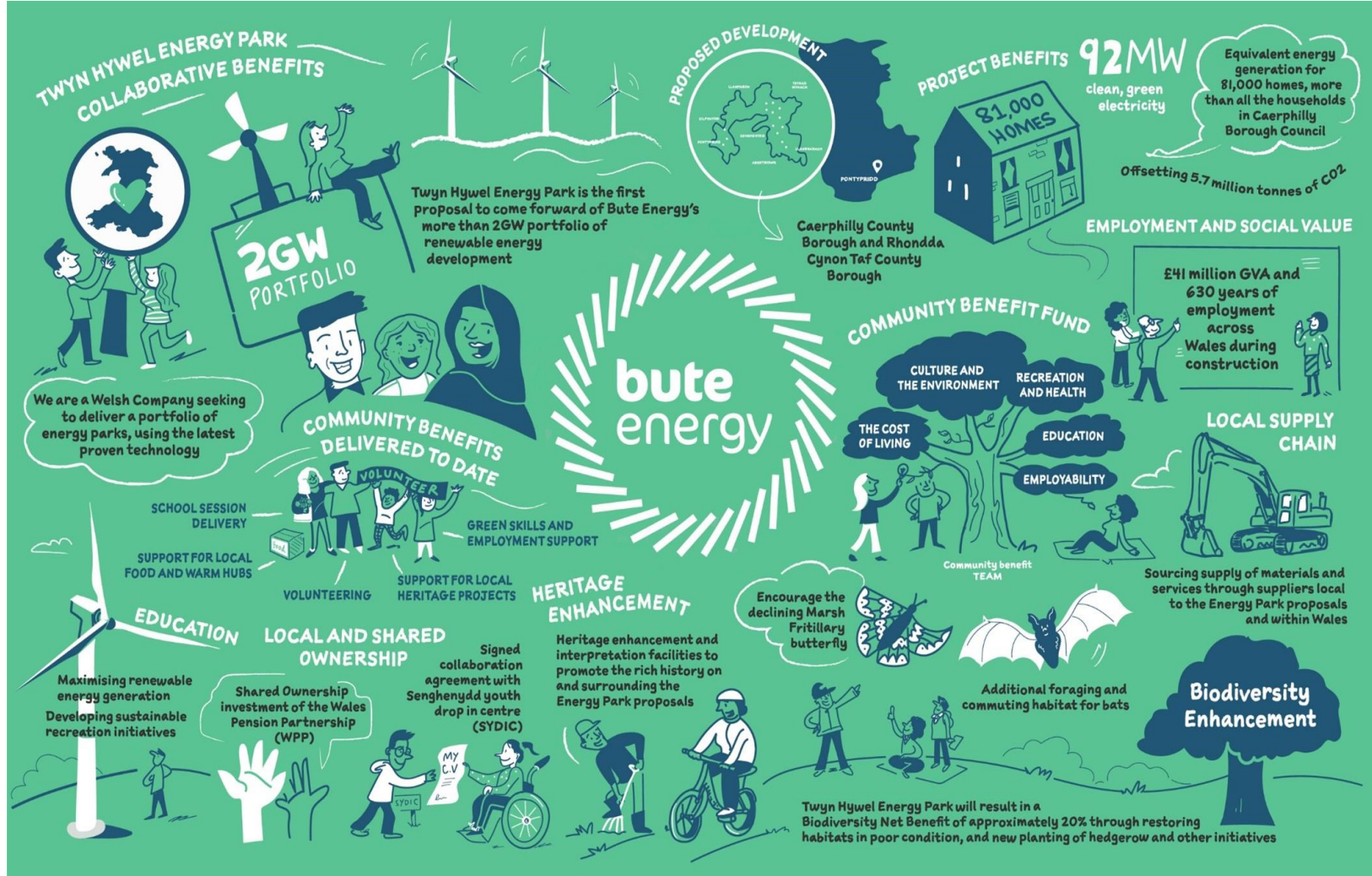
1.4 The delivery of the Twyn Hywel Energy Park would help attain the following targets in Wales:

- Wales to generate electricity equal to 70% of its consumption from renewable sources by 2030;
- 1 gigawatt (GW) of renewable electricity and heat capacity in Wales to be locally owned by 2030; and
- New renewable energy projects to have at least an element of local ownership from 2020.

1.5 It is noted that in terms of the 70% renewable electricity target by 2030, the Welsh Government has consulted on its proposal to increase this to 100% of consumption by 2035. In terms of local ownership, it is also proposed to increase the target to 1.5GW of renewable energy capacity to be locally owned by 2035.

¹ Welsh Government (2022) Local and Shared Ownership of Energy Projects: Guidance. Available at: <https://www.gov.wales/local-and-shared-ownership-energy-projects-guidance>

Figure 1.1: Twyn Hywel Energy Park Collaborative Benefits Infographic



Chapter 2

Bute Energy

2.1 Bute Energy is an independent renewable energy company headquartered in Wales, combining experience with innovation. We are in a climate emergency and a cost-of-living crisis, and our supply of energy is threatened by world events. Bute Energy is acting now, taking positive proactive steps to help address these issues, while investing in communities in Wales to help them have a healthy future.

2.2 Bute Energy has a vision of a healthier, wealthier Wales that uses energy generation as a positive power for the world, for Wales, for local communities – for this and future generations.

2.3 In doing so, the company is committed to:

- Maximising renewable energy generation from each proposal whilst protecting the environment and supporting local communities;
- Delivering long-term community benefits to support residents, charitable organisations and businesses surrounding each renewable project;
- Sourcing our products through the local supply chain;
- Developing new skills and apprenticeship programmes; and
- Developing sustainable, environmental and recreation initiatives which increase the local and regional value of our development sites.

2.4 Bute Energy want to help Wales accelerate the delivery of its ambitious climate change targets. Bute Energy are committed to building energy parks swiftly, increase national energy security and contribute towards delivering net zero.

2.5 Bute Energy has a portfolio of renewable energy generation projects at varying stages of development. This includes over 2GW of onshore renewable energy proposals across Wales.

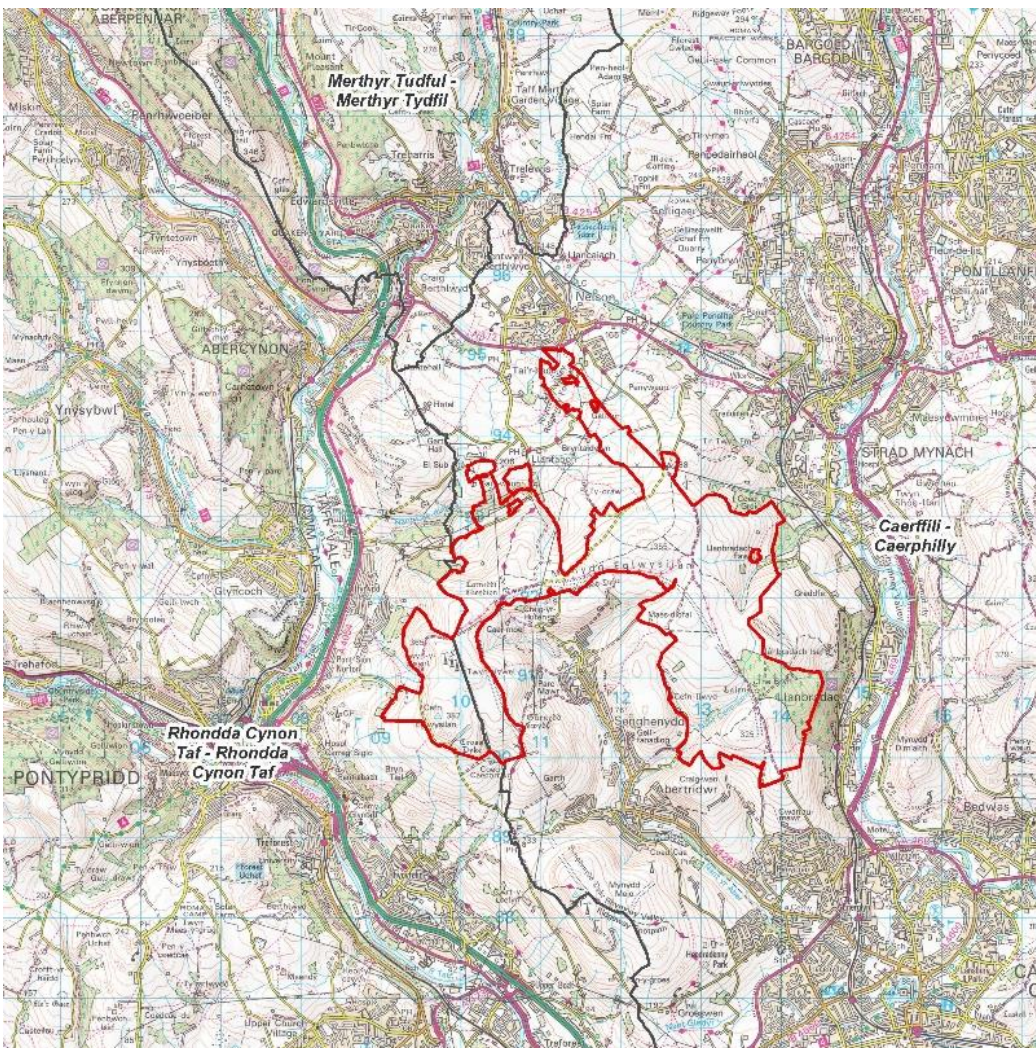
Chapter 3

The Proposed Development

3.1 Twyn Hywel Energy Park Ltd is applying to Welsh Ministers for permission to construct and operate the Twyn Hywel Energy Park (“the Proposed Development”). The Proposed Development is located approximately 16km north of Cardiff, on the border of Caerphilly County Borough (CCBC) and Rhondda Cynon Taf County Borough (RCTCBC). The majority of the ‘redline’ boundary of the application site lies within the CCBC area, with the western portion within RCTCBC.

3.2 The Proposed Development location is shown in **Figure 3.1** below:

Figure 3.1: The Proposed Development location



3.3 The Proposed Development will include:

- Up to 14 wind turbines, each with a maximum blade tip height of 200m. The indicative output capacity at this stage is 92.4MW, with each turbine providing up to 6.6MW. However, this capacity may vary subject to the final turbine model chosen.
- Crane hardstandings and adjacent laydown areas for each turbine location.
- Approximately 14.99km of access tracks (of which approximately 12.27km will be new track and 2.73km will be upgraded existing track) and associated ancillary engineering works.
- An electrical substation and control building.
- Onsite underground electrical cables linking the turbines and the onsite substation, generally laid in cable trenches alongside access tracks.
- Grid connection export cable search corridor from the onsite substation to the 400kV Cilfynydd substation.
- A permanent anemometer mast of up to 120m in height.
- 21 watercourse crossings and associated infrastructure.
- Onsite vehicle turning heads and passing places.
- Site signage.

3.4 The Proposed Development has a grid connection agreement in place with National Grid at Cilfynydd substation, approximately 3km to the north. If the Proposed Development receives consent, the grid connection agreement and the programme for construction of the Proposed Development facilitate the export of electricity to the grid in 2025, thereby making a meaningful contribution towards the 2030 renewable energy generation targets set by the Welsh Government.

Chapter 4 Benefits of the Proposed Development

Wellbeing of Future Generations

4.1 The focus that Bute Energy is putting on maximising the positive benefits is shown in the positive well-being potential of the development to communities in Wales. The Proposed Development will make a positive contribution to all of Wales' well-being goals through the actions it will take as part of the supply chain engagement, site enhancements and the approach to community benefit funding. An analysis within the Socio-Economic Impact Report (Document 14.1: Socio-Economic Impact Appraisal) of the proposed activities of the Proposed Development, and the 50 well-being indicators, found that the development, construction and operation of the Proposed Development will make a particularly strong and direct contribution to:

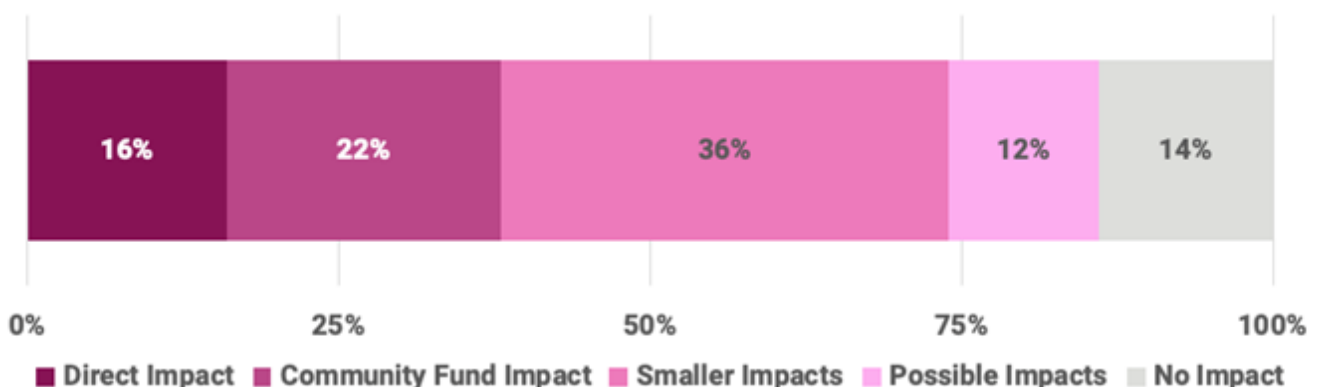
- A prosperous Wales;
- A resilient Wales; and
- A globally responsible Wales.

4.2 These positive impacts will come from the role the project will have in the energy transition and the high-quality jobs that will be required to support it. These well-being benefits will be maximised in Wales through the engagement with the local supply chain.

4.3 The community benefit funding options (see **Chapter 6** below) will also contribute to other well-being goals, through the support it will provide for education, employability, education and culture and cost of living support programmes.

4.4 In total, the Proposed Development has the potential to make a positive contribution to over 80% of the well-being indicators of Wales.

Figure 4.1: Percentage contribution to the well-being indicators of Wales.



4.5 Further detail regarding the Proposed Development's alignment with Welsh Government Wellbeing of Future Generations indicators can be found in Document 14.1: Socio-Economic Impact Appraisal.

Summary of Proposed Development Benefits

Carbon Savings

4.6 The Proposed Development's 'payback time' of CO₂ emissions has been assessed to be in the region of 1.5 years. This is defined as the length of time (in years) required for the Proposed Development to be considered a net avoider of emissions rather than a net emitter. Over the 45-year operational lifetime of the Proposed Development, the atmospheric carbon savings based on the equivalent fossil fuel generated energy are estimated to be equivalent to a total of 5.4 million tonnes of CO₂. This does not account for the additional soil carbon sequestration associated with biodiversity, habitat and land management proposals. This Annual Carbon saving of Proposed Development would be approximately the equivalent to (or more than) taking all cars off the roads in Caerphilly annually.

Energy Generation

4.7 Based on analysis of the windspeeds at Twyn Hywel and the turbine design currently proposed, the Proposed Development would power approximately the equivalent of 82,234 households per year, more households than are currently in the Borough of Caerphilly (76,300 households).

Economic Impact

4.8 The Socio-Economic Impact Appraisal (Document 14.1) estimates that under a minimum level of content scenario (the minimum level of supply chain content that could be realistically achieved locally), expenditure on construction and development contracts for the Proposed Development could deliver up to £34 million Gross Value Added (GVA) and 530 years of employment across South Wales (with £41 million GVA and 630 years of employment across Wales). The majority of this activity will be linked with the construction and supporting services sectors.

4.9 There is the potential to secure a greater share of the supply chain from Wales. The Socio-Economic Impact Appraisal (Document 14.1) outlines a Supply Chain Development Plan that Bute Energy will endeavour to adopt to maximise the level of Welsh content and the positive economic impacts of the development in Wales. This includes highlighting the potential pipeline of Bute Energy wind energy projects in Wales and building the capacity of local businesses to take advantage of these opportunities when they arise.

Employment, Social Value and Employability Skills

4.10 Employment and supply chain initiatives will make sure the Proposed Development is delivered in the most locally sourced and sustainable way, maximising the potential investment for our communities and for Wales.

4.11 At its peak, the Proposed Development will support 300 jobs across Wales (Document 14.1: Socio-Economic Impact Appraisal). The majority of this employment will be in the construction

and supporting services sector, preparing the ground and energy network in anticipation of the installation of the turbines. The Proposed Development is expected to generate annual economic benefits during its operation and maintenance of up to £3 million GVA and 18 jobs across Wales, and £2 million GVA and 14 jobs in South Wales.

4.12 Further details of employment and socio-economic benefits of the Proposed Development can be found in Document 14.1: Socio-Economic Impact Appraisal.

4.13 Bute Energy are committed to measuring the person-centred social value of all employment generated through the Proposed Development and will report on the social value generated and the stories of the people who have gained employment through the project.

Supply Chain and Social Value

4.14 Bute Energy are building a network of local suppliers to enhance the project's procurement phase. Bute Energy held a meet the buyer event at Coleg y Cymoedd in December 2022 to share our commitment to building a socially responsible supply chain and procurement practices focused on generating local economic and social impact. This will include supporting the most financially secure, well established and industry experienced Tier 1 contractors to engage with local supply chains, as many of the opportunities that could be realised locally involve selling directly to these contractors (see Chapter 4 of Document 14.1: Socio-Economic Impact Appraisal).

4.15 Bute Energy have developed a Social Value standard, which aims to support all our partners working to deliver green energy solutions for Wales, by providing guidance on the delivery of a cohesive network of Social Value. Social Value accredited training as well as access to a bespoke social value platform will be shared with all partners to ensure Bute Energy delivers best practice levels of social value through its contracts.

Employability: Creating Inclusive Pathways into the Industry, Locally

4.16 Our industry experts delivered sessions at Coleg y Cymoedd detailing their roles at Bute Energy and incorporated interactive elements like the solving of real-life case studies that they've encountered in their careers. Students then presented their solutions and discussed ideas.

4.17 Bute Energy have run mock interview sessions with Cardinal Newman and Coleg y Cymoedd students with another session due in March for students at Coleg Gwent. Bute Energy are working with both colleges to scope a South Wales centre of excellence for the renewable energy sector to be able to develop a pipeline of local talent for Bute Energy and the wider industry to become the workforce of the future.

Ecological Enhancement

4.18 An Outline Habitat Management Plan has been developed to identify the most effective measures to enhance biodiversity on the site and compensate for any potential effects on biodiversity that occur as a result of the Proposed Development's construction.

4.19 Measures include, but are not limited to, restoring habitats within the site that are currently in poor ecological condition, new planting of hedgerow for the benefit of a range of species, and a plan to implement more sustainable grazing of the site. Measures in the plan have been

assessed using Natural England's 'Biodiversity Metric' (because there is no Welsh metric) and the Proposed Development is predicted to result in a Biodiversity Net Benefit of over 20%.

4.20 Part of the Proposed Development is a Site of Nature Conservation Importance (SINC) and is designated for a number of habitats present, including acid grassland. The majority of the SINC is considered to be in an unfavourable condition as a result of over historical management, and the restoration of these habitats to a favourable conservation status has been the key focus the Habitat Management Plan. With reduced grazing and monitoring of habitats over the lifetime of the Proposed Development, it is expected that the condition of the SINC will improve, which will in turn have a positive benefit to local flora and fauna.

4.21 The Outline HMP also targets key species of the Local Biodiversity Action Plan through the provision of new hedgerows to provide additional foraging and commuting habitat for bats, improved management of rhôs pasture specifically to encourage the declining Marsh Fritillary butterfly to inhabit the site, as well as the management of three areas of forestry to create suitable breeding habitats for nightjar. Through active monitoring over the lifetime of the project the success of the management plan can be tracked to ensure that the Proposed Development meets its predicted targets of biodiversity net benefit and its commitment to restoring important habitats on site.

Heritage Interpretation

4.22 This section (Heritage Interpretation) and the associated Appendix 1 provides an indication of the potential options for heritage interpretation on and surrounding the Twyn Hywel Energy Park Site. Any Heritage Enhancement Plan or other document seeking to achieve the same objectives would be developed in consultation with relevant stakeholders and landowners after planning permission has been granted.

4.23 There are heritage assets on the Proposed Development site. Heritage interpretation and engagement proposals are being progressed to enable the public to understand and appreciate the local heritage and historic landscape at the Proposed Development site and its surrounds. The final proposals will highlight the important heritage assets in the area around the development, provide a framework for their protection, as well as enhance the public's understanding and interpretation of the assets.

4.24 Bringing together the historic environment elements that make the Proposed Development's landscape unique, Wessex Archaeology are delivering a bespoke heritage engagement and interpretation project titled, 'Below, Above and Beyond'. This concept is based on the premise of 'connection'; to connect young people and the local community, to heritage, to nature, to the landscape and to each other and provide them with opportunities to learn and to be creative in a safe and empowering space. Further details regarding Below, Above and Beyond can be found in **Appendix 1**.

4.25 We will explore the idea of energy within the landscape, especially how it was used and how it has changed over time taking particular note of the emergence, use and decline of the coal mining industry within the area.

- Below – an understanding of the archaeology and heritage embedded in the land. Who lived here before?

- Above – an appreciation of the landscape as it is today and how we relate to it. Why and how do we look after the landscape?
- Beyond – an awareness of the evolution of the landscape and how communities can engage with it. What next for the landscape, for you, and for the planet?

4.26 Cocreated with local communities, Below, Above and Beyond allows for shared ownership and investment whilst directly reflecting the needs and interests of the local community and focusing on the stories that are important to them. Below, Above and Beyond is an aspirational and transformational project in the realm of public engagement through which a variety of legacy products/engagement projects could be delivered depending on community interests.

4.27 These enhancements will be developed into a Heritage Enhancement Plan in consultation with Cadw, GGAT and local heritage interest groups to enhance understanding of the heritage resource of the Proposed Development and make this information more accessible.

Recreation and Access

4.28 In addition to the Community Benefit Fund theme around Recreation and Health initiatives (see **Chapter 6** below), Bute Energy have begun discussions with both local and national organisations to investigate ways to facilitate access to the Proposed Development.

4.29 We are developing a Strategic Recreational Framework (Appendix 1 of Document 4.1: Design and Access Statement), with local user groups, to consider the options available to ensure the Proposed Development can be accessible for all while ensuring that the common land, which makes up a large part of the site, can also be used for continued grazing and habitat management. Any initiatives arising from the Strategic Recreational Framework will consider the needs of current and future users.

Chapter 5

Local and Shared Ownership

5.1 The Welsh Government defines 'locally owned' installations as energy installations, located in Wales, which are owned by one or more individuals or organisations wholly owned and based in Wales, or organisations whose principal headquarters are located in Wales.

5.2 The Proposed Development has both local and shared ownership through being a Welsh registered company with its principal headquarters in Wales, investing the money of Welsh working people to develop our projects.

5.3 The Proposed Development is a locally owned project through Bute Energy being a company registered in Wales, with more than 40 staff based between our Cardiff headquarters and our two additional offices in Wales.

5.4 'Shared ownership' refers to a project owned by more than one legal entity. Examples exist where the ownership of a project is shared between a developer and a community group, individuals, landowners, or a public sector organisation.

5.5 Shared Ownership is demonstrated through the investment of the Wales Pension Partnership (WPP) in the Proposed Development. The WPP is a collaboration of local government pension schemes in Wales. It invests the pensions of local government staff and employees from councils, housing associations, schools, the police service and the voluntary sector. The WPP Members will invest c.£70m in the development of Bute's onshore wind Energy Parks, including the Proposed Development. There is the option for the WPP Members to invest further – investing a total of up to £200m as the Bute Energy onshore Energy Parks advance through development, planning and into construction and operation. This marks one of the most significant Welsh public sector investments into Welsh green energy projects. It invests the pensions of local government staff and employees from councils, housing associations, universities, schools, police services and the voluntary sector across Wales. The WPP is investing in 16 Energy Parks in development by Bute Energy, of which Twyn Hywel Energy Park, the Proposed Development is the first to come forward.

5.6 In addition to the WPP investment Bute Energy have a signed collaboration agreement with Senghenydd youth drop in centre (SYDIC) to deliver a guaranteed annual revenue throughout the lifetime of the Proposed Development. This equates to a staged payment in line with the development phasing of the Proposed Development. Once the Proposed Development is constructed and operational the annual revenue received by SYDIC will equate to a the revenue share of a single turbine, or £50,000 a year – whichever the greater. This approach provides a guaranteed minimum payment per year to SYDIC for 40 years.

5.7 As a result of the local and shared investment mechanisms described above, the Proposed Development meets the requirements of both Local and Shared Ownership as set out in the Local and Shared Ownership of Energy Projects: Guidance¹.

Chapter 6

Our Stakeholders and the Engagement Process

6.1 Bute Energy has taken a multi-phase approach to engagement with both statutory and non-statutory stakeholders near the Proposed Development. This has included local residents, community organisations and groups, potential suppliers, key planning and statutory stakeholders.

6.2 Further detail regarding local, statutory and non-statutory engagement can be found in Document 5.1: Pre-Application Consultation Report.

High Level Stakeholder Engagement Mapping

Social Mapping

6.3 Our community engagement is underpinned by extensive mapping of the 2021 census data overlaid with the mapping of organisations, groups and services that exist to support the community. Each organisation is linked to place based challenges that they aim to have positive and tangible impacts towards. These place-based challenges have been identified through our conversations with local residents and groups.

6.4 These in-depth maps are then analysed to allow us to gain a better understanding of both the gaps and potential areas of focus for social investment to inform our wider community engagement.

Community Engagement Approach

Objectives

6.5 From the outset of community and stakeholder communications for Twyn Hywel Energy Park, Bute Energy wanted to establish a clear and transparent approach to engagement and to seek to work collaboratively with local communities to understand their views on the proposals.

6.6 In addition to statutorily required consultation and engagement, the Applicant's project team were keen to seek out and engage with those most interested in the proposals, as well as keeping the wider community informed, providing full and directly relevant information to stakeholders in the area surrounding the site. This would enable the Applicant to understand how the community wanted to be involved in the process and gain a better appreciation of concerns and objectives which the communities may have around a development of this kind.

6.7 The Applicant wanted to work collaboratively to support local community groups and representatives, understand the challenges which have faced the communities and how the development could respond to those challenges.

6.8 At the outset of the project, the Applicant established the following objectives described in **Table 6.1** for engagement.

Table 6.1: Objectives for engagement

| Objective | Description | How that was Achieved |
|--------------------------------|--|--|
| Transparency | <ul style="list-style-type: none"> ■ Work to build trust in the Applicant’s development approach and project team through ensuring full and transparent information regarding the Proposed Development is provided. ■ Deliver what is agreed/promised and insist on an open approach. ■ Be consistent in all communication across stakeholders, communities and groups. | <ul style="list-style-type: none"> ■ At each development milestone including the scoping stage, further design iterations and final proposals, the details of the Proposed Development were distributed to stakeholders and communities surrounding the site. This was provided (as appropriate) through the Proposed Development’s website, press advertising, direct engagement, postal distribution, exhibitions and drop-in consultations, an online webinar and virtual exhibitions. ■ Comments and feedback from events were considered at each stage, and wherever possible proposals and/or assessments were adjusted in response. Follow up information was provided at the statutory consultation engagement events. ■ Regular engagement with consultees has ensured that there has been a continuous and consistent dialogue between the project team and stakeholders and consultees. The frequency of engagement has varied depending on the needs/wants of the stakeholder and the project team. |
| Proactive, not reactive | <ul style="list-style-type: none"> ■ Strive to pre-empt issues/concerns ahead of time and be accessible to have conversations about these. | <ul style="list-style-type: none"> ■ Where community queries arose, positive or negative, the project team sought to respond directly to these, through continued engagement, offering meetings to stakeholders, drop-in sessions, written information, press releases and updates to the project website. |
| Seek community representatives | <ul style="list-style-type: none"> ■ Engage with community representatives and people interested in the proposals. ■ Ensure they have access to up-to-date and accurate information | <ul style="list-style-type: none"> ■ At the start of the engagement, key community members and local representatives were identified as representatives of their communities. The project team were accountable to them throughout the engagement process and continue to maintain these relationships. |

| Objective | Description | How that was Achieved |
|----------------------------|--|--|
| | <p>throughout the project development process.</p> | |
| <p>Seek to build trust</p> | <ul style="list-style-type: none"> ■ Engaging early with communities to ensure a community led approach to shape the future proposals. ■ Work collaboratively with community representatives to ensure the benefits of the community fund are maximised and take account of the individual circumstances of the surrounding communities. | <ul style="list-style-type: none"> ■ Engagement began in Spring 2021 as initial project information was available and discussions were held with communities on how they wanted the proposals to be shaped. These meetings have continued through the development of the Proposed Development. ■ The rich heritage in the area was identified as of value of the community. The Proposed Development has sought to acknowledge this in the design and associated benefits arising from the Proposed Development. ■ The community benefit fund offering will align closely with the priorities shared with us by each community and the Applicant will continue to engage with communities as the area of the Proposed Development progresses. |

6.9 It was always the Applicant's intention to carry out a multistage approach to engagement. Proactively and transparently engaging with local residents and other stakeholders consistently throughout the process to build trust.

6.10 Prior to the statutory consultation period, a series of non-statutory exhibition events were held to introduce the project to the local community and enable them to ask questions of the project team and give their initial impressions of the proposals. Following review of the feedback the project team made changes to the proposals and further non-statutory community drop in events were held to inform communities about the changes, developed on the basis of their feedback and further technical and environmental assessment and advice from the project team.

6.11 In addition to community engagement and outreach, efforts have been made to target local suppliers. These range from education and skills providers to local businesses which are relevant to the construction and operation of our project. Many residents we spoke to were concerned about training and job opportunities in the area, as well as the local economy. This was something Bute Energy wanted to focus on, showing the communities surrounding the project how the Twyn Hywel Energy Park development could see the creation of training opportunities, as well as benefits to local supply chains. A Meet the Buyer Event was held in October 2022.

6.12 The site is an integral part of the local environment for communities in the area, and therefore it was important to consider how users of the site access and would benefit from the infrastructure proposed. The development of a Strategic Recreational Framework (Appendix 1 of Document 4.1: Design and Access Statement) was in direct response to requests for clarity regarding how the site would be accessed, maintained and benefit all users of the site.

6.13 In addition to statutorily required consultation and engagement, the project team were keen to seek out and engage with those most interested in the proposals and provide full and directly relevant information to the communities in the area surrounding the site to provide opportunity for information sharing and feedback throughout each stage of the project design and development.

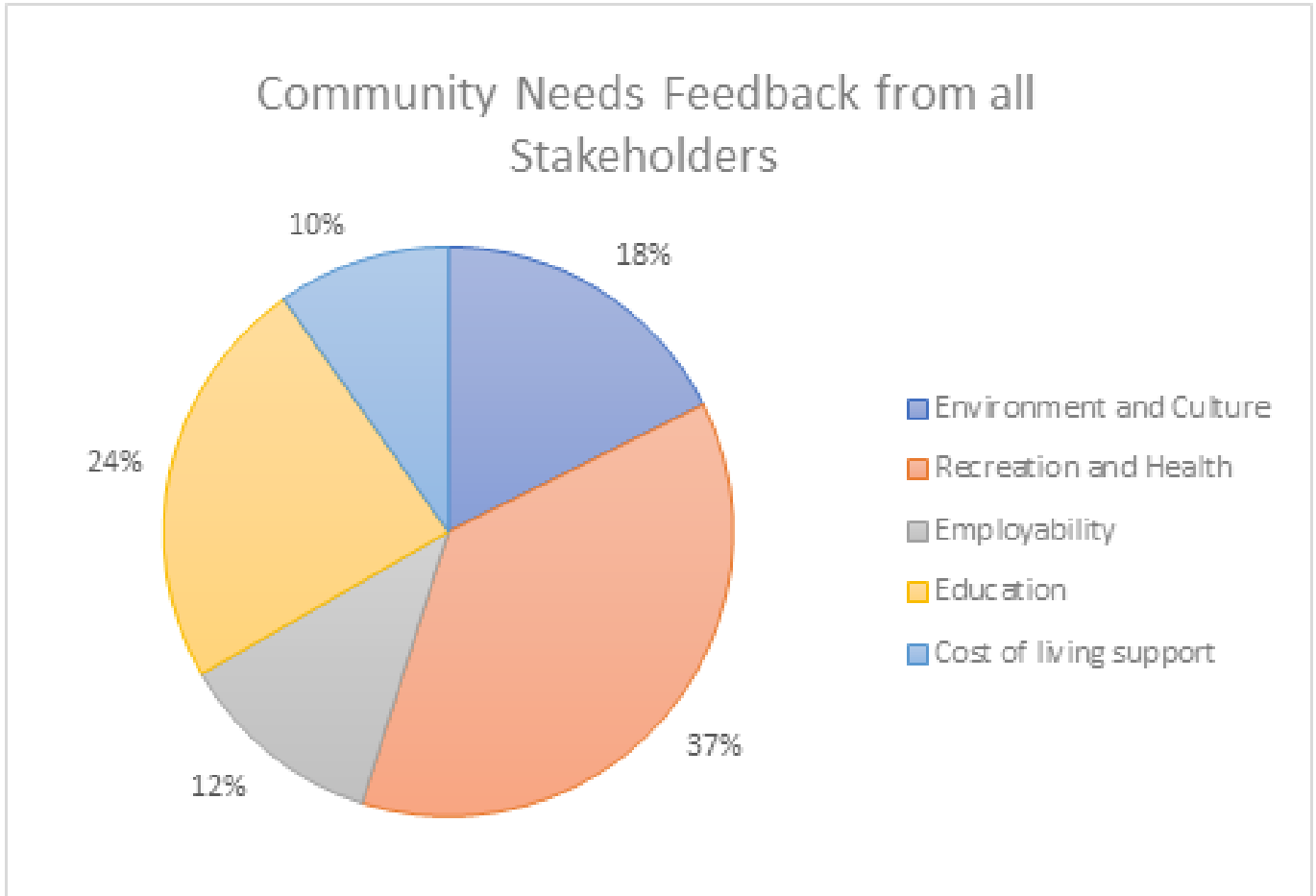
Audit of Local Needs

6.14 Feedback or requests for information from communities nearest the Proposed Development frequently related directly to community benefit or initiatives supported by community benefit funding.

6.15 The approach to the community benefit fund offering has focused on maximising the potential benefits from direct funding mechanisms and partnering with local groups to deliver tangible benefit through the operational lifetime of the Energy Park.

6.16 Based on a constructive and varied set of responses to requests for feedback regarding the proposals for community benefits, Bute Energy heard overwhelming support for recreation and health initiatives, support for youth and education support, as well as initiatives which support the local historic and natural environment.

Figure 6.1: Key themes emerging from community discussion during first phase of engagement (based on written submissions to the Twyn Hywel Energy Park Team)



6.17 Since the initial feedback, further engagement with the local community has highlighted a growing need for action to support those affected by the cost-of-living crisis and rising energy bills.

6.18 A variety of methods and approaches to engagement with statutory and non-statutory stakeholders has been used to ensure maximum engagement. Further details can be found in Document 5.1: Pre-Application Consultation Report.

Chapter 7

The Community Benefit Fund

7.1 Bute Energy have committed to delivering £7,500 per megawatt of generating capacity for the Twyn Hywel Energy Park. The Community Benefit Fund (CBF) is also linked to the CPI price index to allow for economic inflation. The Community Benefit Fund Offering substantially exceeds the industry average and maximises the benefit of this investment for the local community. Based on the current proposed capacity from the project the CBF would result in more than £30M (in present day terms) of local investment throughout the lifetime of the Energy Park.

7.2 The community benefit team are working in communities nearest to the Proposed Development to understand their needs and aspirations for the future. All this qualitative information is collated on our community maps and investment priorities for the fund will be developed.

7.3 The community benefit team will work with groups to build relationships and to support the development of projects and funding proposal that meet the needs of their communities to be put forward for funding through the CBF.

Community Benefit Fund Governance Structure

7.4 The Community Benefit Fund governance structure is set out here to be in line with the strategy and themes identified by the communities.

7.5 The Community Benefit Fund will be formed as an incorporated charitable entity (the “CBF”) regulated by the Charity Commission. The CBF will be separate to Bute Energy. It will deploy the funding to meet the evolving needs of the communities in the vicinity of the Twyn Hywel Energy Park.

7.6 The decision making will be informed by a local grants panel of individuals, appointed by the CBF, who live and or work near the project with lived experience of community investment priorities.

7.7 The CBF will enter into a legally binding and enforceable contract with Twyn Hywel Energy Park to accept the commitment to deliver £7,500 per megawatt (index linked) of generating capacity for the life of the energy park. The contract will be conditional on the energy park becoming fully operational and generating electricity.

7.8 The governance structure above will provide the opportunity for representatives from the local communities to take part in the grant allocation decision-making process.

7.9 Bute Energy will work alongside the future CBF to support a strong, informed community voice in the investment decisions made and to provide community groups with a consistent and robust way of evaluating the impact of their work, capturing stories and case studies of what

Bute Energy hope will be significant positive societal benefit enabled as a result of the Community Benefit Fund.

7.10 Bute Energy are also committed to making a greater proportion of Community Benefit Funding available early in operation of the Proposed Development to accelerate the benefit to those communities potentially impacted by construction. The details of this will be agreed by the CBF in consultation with the grants panel.

7.11 The below table sets out the CBF Themes of Focus following extensive engagement with local communities, groups, potential partners and identified projects which could benefit if the Proposed Development is consented and constructed.

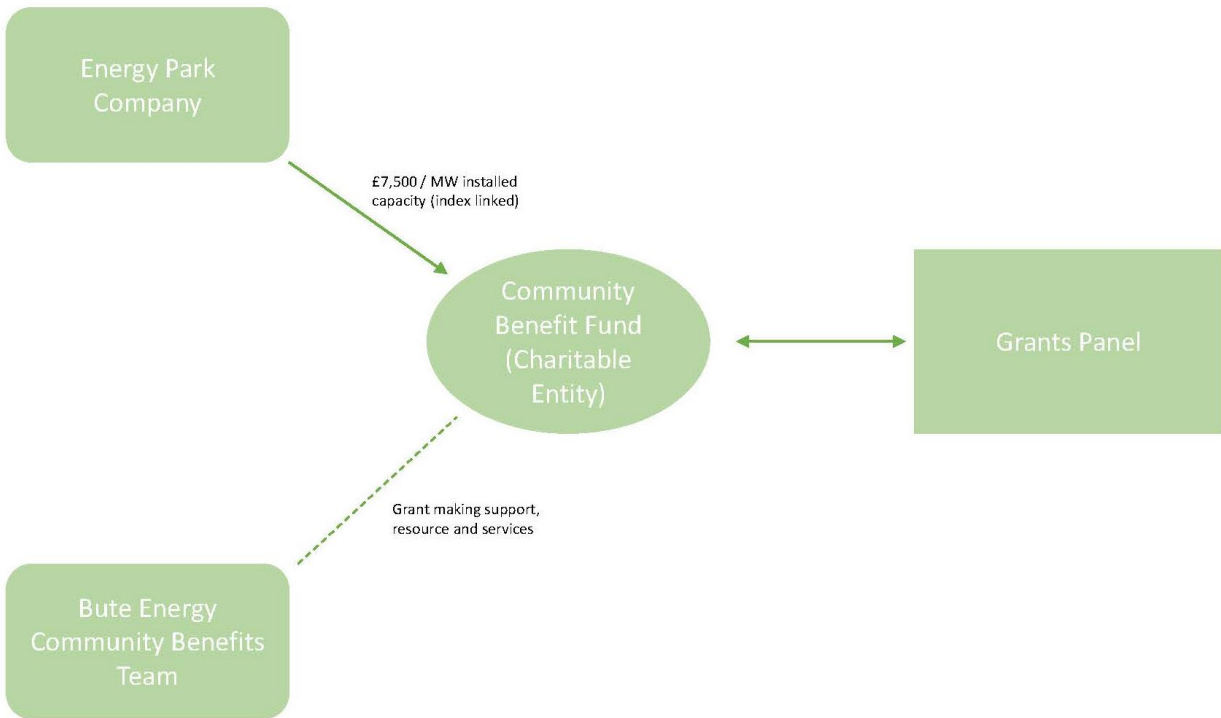


Figure 7.1: CBF Organisation structure.

Table 7.1: Summary of Bute Energy Community Benefit Team themes of focus

| Theme of Focus and Where Stakeholders Told us to Focus | Relevant Future Generations Wellbeing Goal | Partners/Projects Identified and Examples of How Twyn Hywel Could Make a Difference |
|---|--|---|
| <p>Environment and Culture</p> <p>Identifying opportunities to engage the community in the natural environment, celebrating and promoting local culture, heritage sites and the biodiversity and wildlife locally.</p> | <p>Vibrant culture and thriving Welsh Language</p> <p>A Wales of cohesive communities</p> <p>A healthier Wales</p> | <p>Funding to directly support local Heritage Groups, cultural and heritage activities.</p> <p>Increasing understanding of the heritage features in the area on through further investigations in collaboration with local, regional and national heritage groups.</p> <p>Wessex Archaeology 'Below, Above and Beyond' project: Mapping the changing landscape and its history and developing tools for learning and interpretation.</p> <p>A Wildlife Order to be appointed to facilitate Habitat Management and Biodiversity initiatives, recreational access and maintenance, education initiatives.</p> <p>Facilitation of access, enjoyment of wildlife and biodiversity.</p> <p>A Habitat Management working group with local natural environment stakeholders and community.</p> |
| <p>Recreation and Health</p> <p>To improve access to outdoor recreation and health and wellbeing activity available locally and scope opportunities and partnerships to</p> | <p>A Wales of cohesive communities</p> <p>A Healthier Wales</p> <p>A Wales of cohesive communities</p> | <p>Investment to improve accessibility and amenity for multi-purpose use including horse riders, mountain bikers, walkers, trail runners and other.</p> <p>A long-term management and improvement plan for the site developed in consultation with site users.</p> |

| Theme of Focus and Where Stakeholders Told us to Focus | Relevant Future Generations Wellbeing Goal | Partners/Projects Identified and Examples of How Twyn Hywel Could Make a Difference |
|---|--|--|
| <p>encourage a diversity of use of the open spaces.</p> | <p>A more resilient Wales</p> | <p>Virtual guides created to help multi-purpose users of the trails. Local heritage inclusive walks developed and promoted. Engagement with services aiming to improve the wellbeing and quality of life of people living in the community including support for the elderly, mental health services and additional learning or support needs. Local sports club participation in the benefit fund and collaborate on initiatives between sports clubs in the local area for example:</p> <ul style="list-style-type: none"> ■ A 5g Sports pitch in collaboration between community sports clubs to facilitate year round operation of local clubs with extensive reach within communities. ■ A local recreational area and outdoor gym and sports facilities. <p>Working with local youth organisations to develop outdoor education and wellbeing opportunities.</p> |
| <p>Employability To work with local education, training and employability providers to create inclusive employment pathways ensuring a menu of bespoke opportunities to enter the renewable energy industry.</p> | <p>A prosperous Wales A resilient Wales A healthier Wales A more equal Wales</p> | <p>Commitment to deliver, wherever possible, apprenticeships, traineeships or skill transfer programmes through the procurement and supply chain of the project, separately to the CBF. To work with Coleg Gwent and Coleg Y Cymoedd to enhance the provision of green skill development programmes available locally. To create a green skills centre of excellence in South Wales, enabling a pipeline of talent for the industry.</p> |

| Theme of Focus and Where Stakeholders Told us to Focus | Relevant Future Generations Wellbeing Goal | Partners/Projects Identified and Examples of How Twyn Hywel Could Make a Difference |
|--|---|--|
| <p>Education</p> <p>To design and deliver interactive sessions engaging learners of all ages in the diverse benefits and relevant topics of social importance that the renewable energy sector affects.</p> | <p>A prosperous Wales</p> <p>A resilient Wales</p> <p>A healthier Wales</p> <p>A more equal Wales</p> <p>A Wales of vibrant culture and thriving Welsh language</p> | <p>Partnership with local youth groups to futureproof their services and support new activities.</p> <p>Provide funding for development of projects with local groups supporting the wellbeing of children and families.</p> <p>Commitment to delivery of inclusive activities and grants for local school initiatives promoting the importance of sustainability, renewable energy and opportunities for careers in the sector.</p> |
| <p>Cost of Living Support</p> <p>To partner with organisations who are working to support households affected by the cost of living crisis to understand where the CBF can be used to directly benefit people, with a specific focus on those living in fuel poverty.</p> | <p>A healthier Wales</p> <p>A more equal Wales</p> <p>A Wales of cohesive communities</p> | <p>Commitment of early stage budget support and donations during planning stage of Twyn Hywel Energy Park.</p> <p>On-going annual commitment of one third the CBF supporting Energy Conservation and Household Support including:</p> <ul style="list-style-type: none"> ■ Food banks; ■ Warm banks; ■ Household energy efficiencies; ■ Community Hubs; and ■ Work with Housing Associations to add value to existing energy efficiency and support programmes. |

Chapter 8 Community Benefits Delivered to Date

8.1 During the design of the Proposed Development Bute Energy has already contributed to the local communities in the area surrounding the Proposed Development. A summary of the benefits to the community delivered to date is set out below.

Figure 8.1: The Community Benefit themes of focus and the areas Bute Energy will focus our early engagement



Education

8.2 Bute Energy has delivered 18 sessions to 6 different schools in Welsh and English. Bute Energy will have formal recognition from careers Wales as a valued partner to at least 5 different schools in the area by the end of 2023.

8.3 School workshops have consisted of fun, informative and engaging activities relating to renewable energy. Pupils have enjoyed building turbines and investigating how kinetic (with specific emphasis on wind) energy works.

8.4 7 different session plans have been created; all have adaptations to make them appropriate to a range of different age groups.

8.5 Bute Energy will continue to work with Eco Councils in two primary schools from now until the end of the academic year on a project involving creating an informative video for the schools' stakeholders.

8.6 A group of girls chosen for their interest in the sessions were invited to the office for a visit the week prior to International Women's week where they met women from the industry and discussed their roles.

8.7 Bute Energy has partnered with Engineering Education Scheme Wales (EESW) STEM to sponsor the 2023 Awards Ceremony in Swansea on the 27th of March. The award Bute Energy has sponsored is the 'best consideration of environmental impact'.

8.8 Bute Energy will be engaging with 400 sixth form students at the event with details about Bute Energy and the careers available in the renewable energy industry.

8.9 Next year Bute Energy has agreed to be partnered with a school over a six month period to support students with developing a project addressing a specific sustainability themed brief set by us.

8.10 Bute Energy will also be hosting a Girls into STEM day in collaboration with EESW during the summer term of 2023.

Cost of Living Support During the Planning Stages of Twyn Hywel

8.11 Bute Energy in partnership with Gwent Association for Voluntary Organisations (GAVO) Caerphilly, identified 15 food and warm hubs in the areas surrounding the Proposed Development. Each of these projects received a gift of £500 in December 2022 to help with winter energy costs.

8.12 Bute Energy have a signed partnership proposal with Care and Repair Cymru (Caerphilly team) to target household energy efficiency support for those over 50. The £10,000 donation from Bute Energy enabled them to be at the Proposed Development's statutory consultation events to gain new referrals and to increase the capacity of officers working to support those in communities near the project.

Twyn Hywel Staff Volunteering Day 2023

8.13 The policy launched on the 10th of February and matches individual staff skills, experience, interests and preferred ways of working with specific needs and skill gaps identified through profiling and engaging with community groups and service/support providers.

8.14 To launch the policy over 30 Bute Energy colleagues contribute to our staff volunteering day around the Proposed Development's location, this included:

- Clearing, repairing and planting at the Little Lounge allotment in Cilfynydd so toddlers can enjoy outdoor adventures and explore the wonder of nature with their friends and families;
- Painting a room at the Caerphilly Miners Centre to facilitate a suitable space to support their vision for a safe, welcoming and accessible building, and to support the wellbeing of the community;

- A litter pick and clean-up on the Mynydd Eglwysilan site between Nelson and Caerphilly – with a whole skip and more than 40 bags of rubbish being filled – resulting in a clean outdoor space and pathways;
- A visit to Coleg y Cymoedd and Llancaeath Junior school where young people had the opportunity to learn all about renewable energy in a virtual workshop run by members of the Bute Energy team; and
- A donation of over £1000 of hygiene products, to Caerphilly County Borough Council for distribution to people using Food Banks across the county.

Chapter 9

Conclusions

9.1 Welsh Government guidance¹ sets out how decarbonisation of Wales' energy system and the wider economy can deliver the best outcomes for the people of Wales. It supports the development of proposals which are 'locally owned' or have 'shared ownership' as defined by the policy guidance.

9.2 The guidance also refers to Future Wales² and, in the context of the determination of DNS applications, it reinforces the Welsh Government's policy associated with community benefits in the context of large scale renewable and low carbon energy schemes. It makes it clear that although such benefits are not a planning consideration, the Welsh Government's approach includes local ownership as a mechanism to ensure that the benefits of any scheme are accrued over the long term.

9.3 Bute Energy recognises that planning decisions must be based on an assessment of the impacts of a proposed development, irrespective of who the applicant is in terms of ownership or community benefit. Bute Energy has prepared this CBR in line with the guidance and undertaken extensive engagement which has influenced the proposals contained within it. The CBR comprehensively draws together the evidence in relation to a range of social, environmental and economic benefits which can be (and have already been) delivered as a result of the Proposed Development.

9.4 This CBR is submitted alongside the DNS application to demonstrate the full economic, environmental and social benefits of the Proposed Development which can be used by the Welsh Ministers to weigh the full benefits of the Proposed Development against the impacts including details on local and shared ownership.

² Welsh Government (2021) Future Wales: The National Plan 2040. Available at: <https://www.gov.wales/future-wales-national-plan-2040-0>

Appendix 1

Heritage Interpretation

9.5 This Appendix provides an indication of the potential options for heritage interpretation on and surrounding the Twyn Hywel Energy Park Site. Any Heritage Enhancement Plan or other document seeking to achieve the same objectives would be developed in consultation with relevant stakeholders and landowners after planning permission has been granted.

9.6 There are heritage assets on the Proposed Development site. Heritage interpretation and engagement proposals are being progressed to enable the public to understand and appreciate the local heritage and historic landscape at the Proposed Development site and its surrounds. The final proposals will highlight the important heritage assets in the area around the development, provide a framework for their protection, as well as enhance the public's understanding and interpretation of the assets.

9.7 Bringing together the historic environment elements that make the Proposed Development's landscape unique, Wessex Archaeology are delivering a bespoke heritage engagement and interpretation project titled, 'Below, Above and Beyond'. This concept is based on the premise of 'connection'; to connect young people and the local community, to heritage, to nature, to the landscape and to each other and provide them with opportunities to learn and to be creative in a safe and empowering space.

9.8 We will explore the idea of energy within the landscape, especially how it was used and how it has changed over time taking particular note of the emergence, use and decline of the coal mining industry within the area.

- Below – an understanding of the archaeology and heritage embedded in the land. Who lived here before?
- Above – an appreciation of the landscape as it is today and how we relate to it. Why and how do we look after the landscape?
- Beyond – an awareness of the evolution of the landscape and how communities can engage with it. What next for the landscape, for you, and for the planet?

9.9 Cocreated with local communities, Below, Above and Beyond allows for shared ownership and investment whilst directly reflecting the needs and interests of the local community and focusing on the stories that are important to them. Below, Above and Beyond is an aspirational and transformational project in the realm of public engagement through which a variety of legacy products/engagement projects could be delivered depending on community interests.

9.10 Archaeology is the discovery and study of artefacts to understand the story of the invisible. Below, Above and Beyond, offers the opportunity to allow underrepresented and underserved communities in the Twyn Hywel landscape who may feel invisible or disconnected to reclaim their visibility, their ideas and their identity. This not only bridges the generation gap but sets in place a foundation for future heritage and place-based connection between communities.

9.11 Following community consultation, Wessex Archaeology have identified the following emerging key themes, within the Wellbeing Aims for Wales:

A prosperous Wales

- Boosting young people's aspirations and skills and broadening horizons.

A resilient Wales

- Promoting green energy projects and how they contribute to the story of the landscape.
- To empower people to understand the positive changes they can make to become a good ancestor.

A healthier Wales

- Increasing young people's access to natural outdoor spaces.
- Reduce isolation and disconnect by encouraging intergenerational experiences powered by shared heritage.

A more equal Wales

- Create welcoming, diverse and thriving spaces by being inclusive and creating cultural opportunities for all.
- Reducing digital exclusion and embracing digital innovation.

A Wales of cohesive communities

- Promoting the use and celebration of the Welsh language.
- An opportunity to reframe 'sad' heritage and celebrate shared histories across a diverse range of cultural and heritage sites, buildings and experiences.
- Leave a positive legacy of social cohesion and wellbeing within local communities, through knowledge and skills sharing.

A globally responsible Wales

- Promoting and looking after the beautiful natural environment, heritage and culture.
- Connecting young people with climate and sustainability in relation to how their landscape has changed over time.

9.12 Considering these themes and the evidence gleaned during the research and consultation process, we have compiled a delivery and resource package to connect the local community to their heritage, Below, Above and Beyond. Short-term experiences that offer opportunities to connect with the heritage of the landscape:

- Guided heritage walks
- School sessions
- 'Meet the Expert' pop up talks
- Careers events

9.13 We have also compiled a list of 3 longer term engagement projects that could be delivered to the local community, particularly focus on intergenerational sharing between younger and

older audiences. Taking part in a longer-term project offers increased benefits for participants. This process gives space for deeper understanding, better connection between participants and the space and time to build relationships, trust and a sense of ownership, pride and advocacy. Social contact, shared experiences and connection to place, all have the power to improve a person's wellbeing. Below offers an overview of the longer-term projects on offer:

- **Settlements** – an experimental archaeology project with young people exploring the story of 100 settlements (the Cantref) and what makes a community. On this project, a group of young people would travel through time from Cairn to Cantref, to Colliery and engage in experimental archaeology to understand how past communities lived in the landscape. They could build their own settlement and with it, its own community. This project is all about taking inspiration from local heritage to learn new skills, get active and build friendships focussed on a common task away from the classroom.
- **Common Ground** – Intergenerational project exploring shared places and heritage with groups of young people and older people. The project would aim to create a shared experience with opportunities to learn new skills, reduce isolation and create a positive legacy of social cohesion. Intergenerational sharing could reduce the divide between generations and give the younger generations a sense of place and purpose.
- **Tŷ unnos, One Night House** – Exploring the Welsh folk tradition of building a house on common land in one night, young people could explore the heritage of the landscape and how humans have used it through time. Working as a team to explore ancient structures and building techniques, young people could gain skills in construction and build a sense of belonging and connection to the Twyn Hywel landscape. This is a celebratory project that aims to shine a positive light on their shared heritage and seeks to encourage a sense of play and creativity.

9.14 As a result of these engagement projects, we will create a resource for the community. Listed below are 3 options of resources that we could create that all tie into community interests and priorities. The content for the resources will be a direct result of an engagement project:

- **Museum in a Box** - A picture is worth a thousand words. An object can tell a thousand stories. A Museum in a Box is a small, friendly, internet-connected interpretation device that has speakers inside. When you place a museum object or postcard on it, an audio response will play. A Museum in a Box resource would allow opportunities for the community to share histories beyond the heritage centre building. It offers a tangible opportunity to explore local heritage and include histories that otherwise haven't been widely explored. The box would offer a well-rounded learning experience, with tactile, aural and visual elements to suit multiple learning styles that can aid with developing a deeper understanding.
- **Digital heritage interpretation panel/trail** – For this resource, heritage interpretation signs could be dotted along various points in the landscape to form a trail. Each sign will have an Info Point internal wifi device securely stored inside, powered by a solar panel. Accessed through a QR code, users could connect to the Wi-Fi and explore videos, PDFs, images and much more information than one panel could ever hold.
- **Below, Above and Beyond 2D animation for children** - The Aber Valley Heritage Group have specifically requested an updated introductory film to their heritage museum that is

targeted towards a younger audience. We are proposing to create a film that incorporates both live action and 2D animation. Although created for use in the Museum, this film could also be featured digitally on their website and in a digital collection for the InfoPoint panels. This film could take you on a journey through the timeline of Senghenydd's history, from prehistory to present day. There is a particular interest in teaching children more about the unique geology of the local landscape, how and why coal was used, and how this use has affected us today.

9.15 These resources cannot exist in isolation and will be reflective of the heritage inclusion and engagement work that we will deliver. Each product aligns with the identified key themes and alongside the engagement experiences and projects create a cohesive package with a legacy to become part of something bigger.

9.16 Promoting and celebrating the use of the Welsh language is key to each proposal, we will ensure that every resource is available in both English and Welsh. We will ensure that opportunities are on offer to Welsh Medium schools and that the heritage of the Welsh language in relation to people, and place is always considered.

9.17 These enhancements will be developed into a Heritage Enhancement Plan in consultation with Cadw, GGAT and local heritage interest groups to enhance understanding of the heritage resource of the Proposed Development and make this information more accessible.